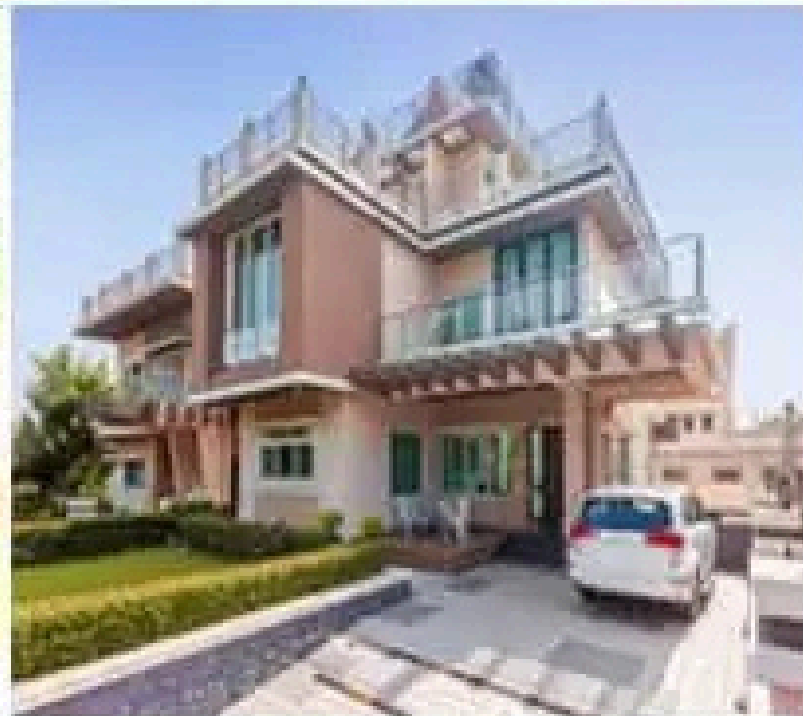
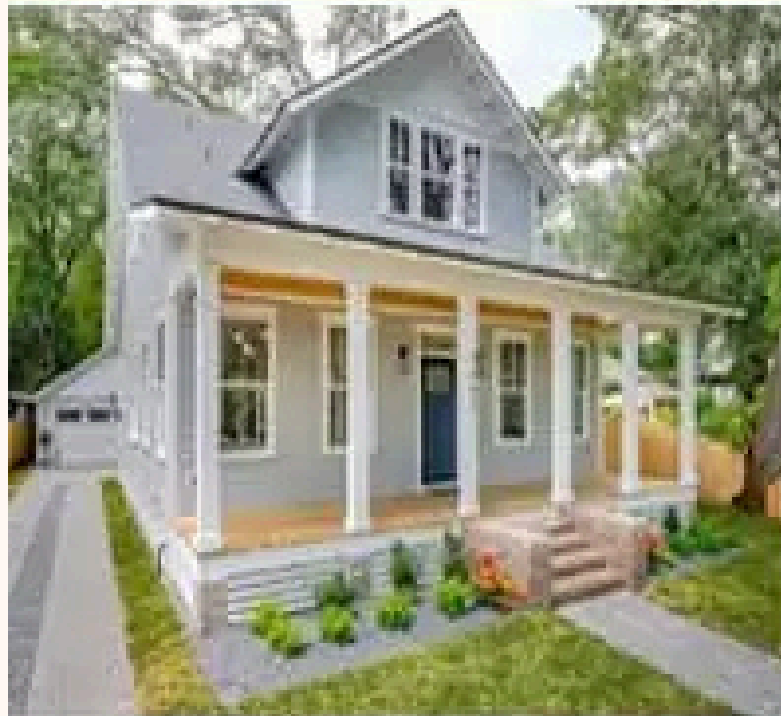


# TYPES OF HOUSES



Presented by Iryna Pekarska

# Types Of House





# A DETACHED HOUSE

---

A house that is not joined to any other house.

- *Prices are rising so fast that people can't afford **detached houses**.*

# A SEMI-DETACHED HOUSE

---

A house that is semi-detached is one that is joined to another similar house on only one side.

- *They live in a semi-detached house..*





# A BLOCK OF FLATS

---

A large building that is divided into apartments.

- *We lived in **a block of flats** where everybody heard everything and it disturbed the neighbours.*



# A TERRACED HOUSE

---

A house that is joined to the houses on either side of it by shared walls.

- *We moved into our two-story Victorian **terraced house** in 2019.*

# A SKYSCRAPER

---

A very tall modern building, usually in a city.

- *The restaurant is at the top of one of the big downtown **skyscrapers**.*

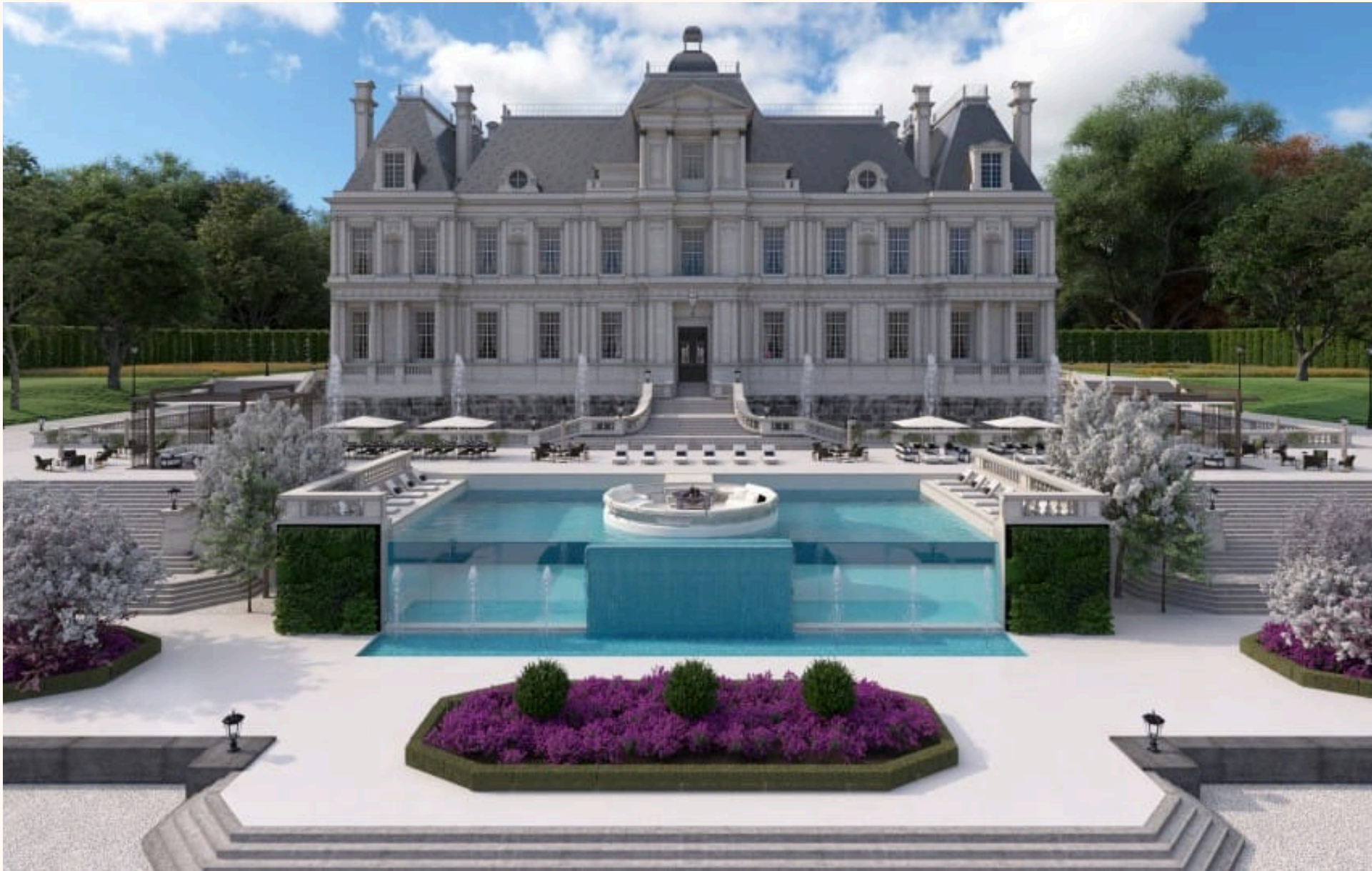


# A MANSION

---

A very large, expensive house

- *The street is lined with enormous **mansions** where the rich and famous live.*





# A CASTLE

---

A large strong building, built in the past by a ruler or important person to protect the people inside from attack.

- *Windsor **Castle** is a tourist destination as well as a popular venue for royal weddings.*

# A PALACE



A palace is a very large impressive house, especially one which is the official home of a king, queen, or president.

- *The king and his family live in the royal **palace**.*



# A VILLA

---

A large and usually luxurious country residence

- *Prices for Spanish **villas** vary enormously.*



# A BUNGALOW

---

A one-storey house, sometimes with an attic.

- *I grew up in a small **bungalow**, with three bedrooms.*



# A COTTAGE

---

A small simple house, especially in a rural area.

- *They live in a beautiful **cottage**.*

# A CHALET

---

A type of wooden house of Swiss origin, typically low, with wide projecting eaves.

- They built a **chalet** in the mountains.



# A CONTAINER HOUSE

---

A living space constructed from a standard shipping container or containers.

- *Container houses* are amazing, and they're very structurally sound.





# A STILT HOUSE

---

Stilt houses are houses raised on stilts over the surface of the soil or a body of water.

- *The houses are built on **stilts** to protect them from the annual floods.*



# A BOATHOUSE

---

A building at the edge of a lake, in which boats are kept.

- *It objected to plans for **a boathouse**.*

# A MOBILE HOUSE

---

A type of building that people live in, usually staying in one place, but able to be moved using a vehicle or sometimes its own engine.



- Many families prefer **a mobile home** for its affordability and flexibility.

# A CARAVAN

---



It is a vehicle without an engine that can be pulled by a car or van. It contains beds and cooking equipment so that people can live or spend their holidays in it.

- Every summer they take a road trip in their family **caravan**.

# A TREE HOUSE

---

A small building, structure, or shelter built among the branches of a tree.

- *I spent hours in our **tree house** when I was a kid.*





# AN IGLOO

---

Igloos are dome-shaped houses built from blocks of snow by the Inuit people.

- *They built an **igloo**, in which they cooked their meals.*

# A TEEPEE

---

A type of tent in the shape of a cone made from animal skins that was the traditional shelter of some Native Americans.

- *The tepee remained warm in the winter and cool in the summer, and was a great shield against the wind.*



# A TENT



A tent is a shelter made of canvas or nylon which is held up by poles and ropes, and is used mainly by people who are camping.

- *Guests will have to pay for their flights and bring **tents** to sleep in.*



# A WINDMILL

---

A building with long parts at the top that turn in the wind, used for producing power or crushing grain.

- *They live in a converted **windmill**.*



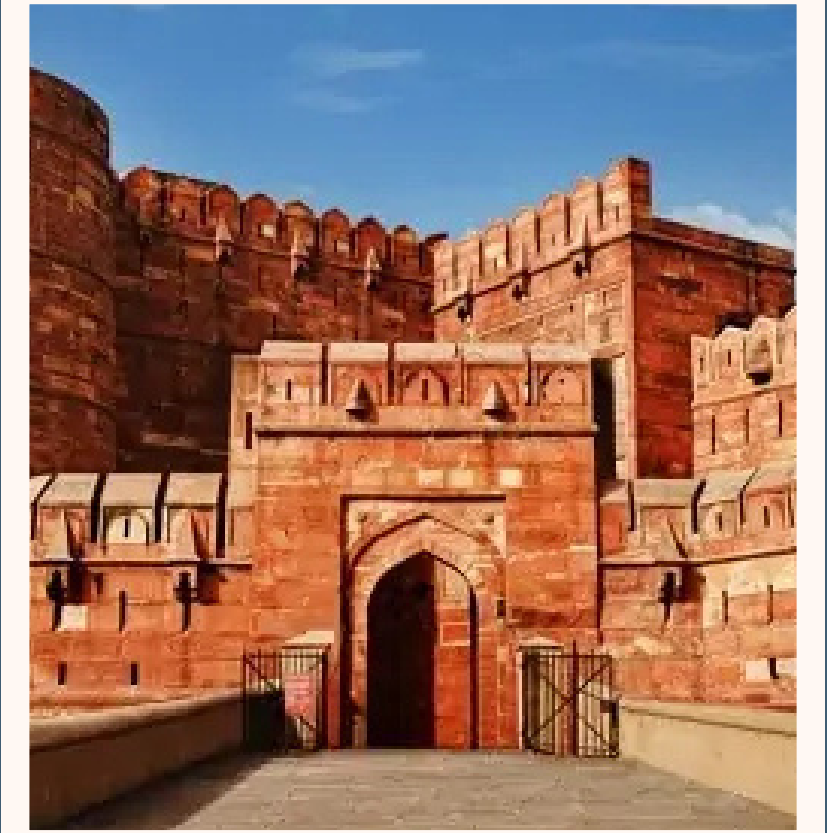
**A hut**



**A farmhouse**



**A lighthouse**



**A fortress**

1. *We spent the night in a flimsy wooden **hut**.*
2. *His home, an old **farmhouse**, is very remote.*
3. *This **lighthouse** has guided ships to shore for over 100 years.*
4. *A great **fortress** was built under the mount.*