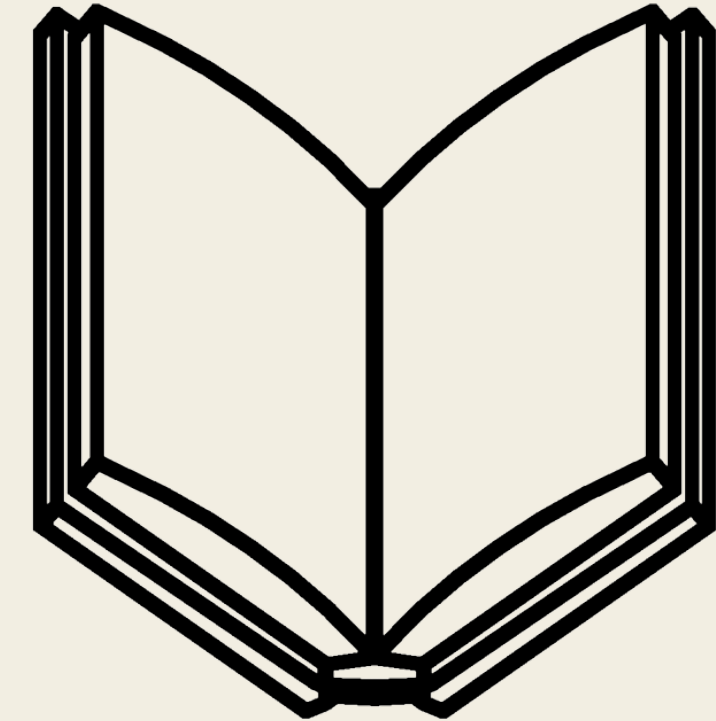
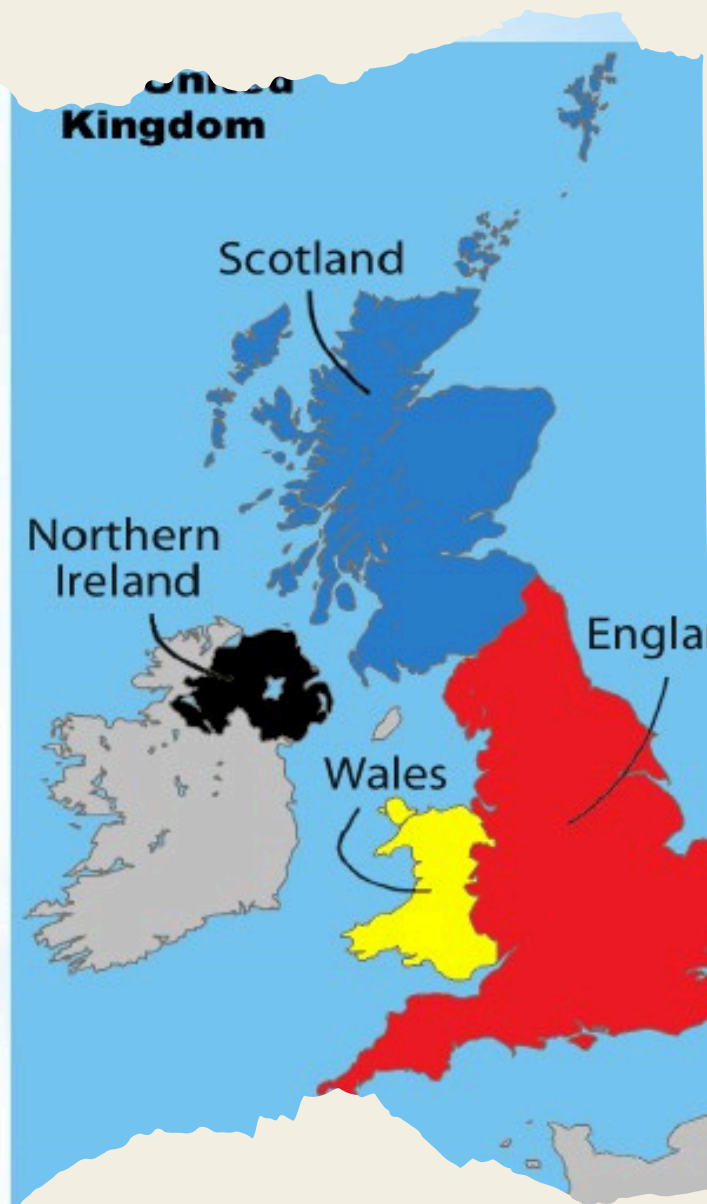


*THE UNITED KINGDOM OF GREAT BRITAIN AND
NORTHERN IRELAND
GRADE: 8
FORM: BRAIN-RING
(INTELLECTUAL QUIZ GAME)*

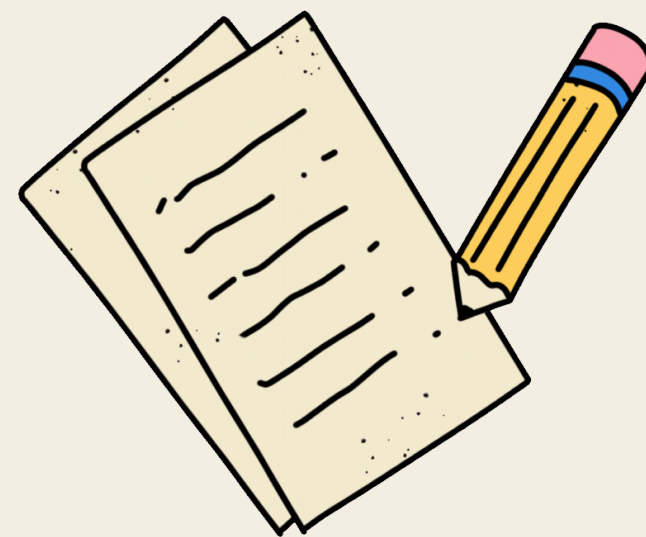


United Kingdom of Great Britain and Northern Ireland is situated on two large islands called the British Isles. The larger island is Great Britain, which consists of three parts: England, Scotland and Wales. The smaller island is Ireland and there are about five thousand small islands.



AIMS:

- TO REVISE AND DEEPEN STUDENTS' KNOWLEDGE ABOUT THE UK (GEOGRAPHY, HISTORY, CULTURE, TRADITIONS);
- TO DEVELOP STUDENTS' COMMUNICATION SKILLS, LOGICAL THINKING, AND TEAMWORK;
- TO FOSTER RESPECT AND INTEREST IN OTHER NATIONS' CULTURES.



1. INTRODUCTION TEACHER

- GOOD AFTERNOON, STUDENTS! TODAY WE ARE GOING ON A JOURNEY TO THE UNITED KINGDOM. BUT WE WILL NOT TRAVEL BY PLANE OR TRAIN - INSTEAD, WE WILL TEST OUR KNOWLEDGE IN AN EXCITING INTELLECTUAL GAME BRAIN-RING.
- LET US FIND OUT WHICH TEAM KNOWS MORE ABOUT THE UK: ITS GEOGRAPHY, HISTORY, TRADITIONS, AND CULTURE.
- TWO TEAMS ARE FORMED (8-9 STUDENTS EACH).
CAPTAINS ARE CHOSEN.
- THE JURY: THE TEACHER + 2 STUDENTS-ASSISTANTS.



II. RULES OF THE GAME



- **EACH CORRECT ANSWER = 1 POINT.**

- **IF THE ANSWER IS WRONG, THE OTHER TEAM HAS THE RIGHT TO ANSWER.**

- **THE TEAM WITH THE HIGHEST SCORE WINS.**



III. GAME FLOW

ROUND 1.

"WARM-UP" (QUICK QUESTIONS)

1. THE CAPITAL OF THE UK? (LONDON)
2. THE OFFICIAL RESIDENCE OF THE MONARCH IN LONDON? (BUCKINGHAM PALACE)
3. THE BRITISH CURRENCY? (POUND STERLING)
4. THE LARGEST ISLAND OF THE BRITISH ISLES? (GREAT BRITAIN)
5. THE COLOUR OF THE ENGLISH ROSE? (RED)



ROUND 2.

"GEOGRAPHICAL PUZZLE"

BELFAST

NAME THE CAPITALS OF THESE COUNTRIES :

- ENGLAND - (LONDON)
- SCOTLAND - (EDINBURGH)
- WALES - (CARDIFF)
- NORTHERN IRELAND - (BELFAST)

LONDON

EDINBURGH

LONDON

CARDIFF



ROUND 3.

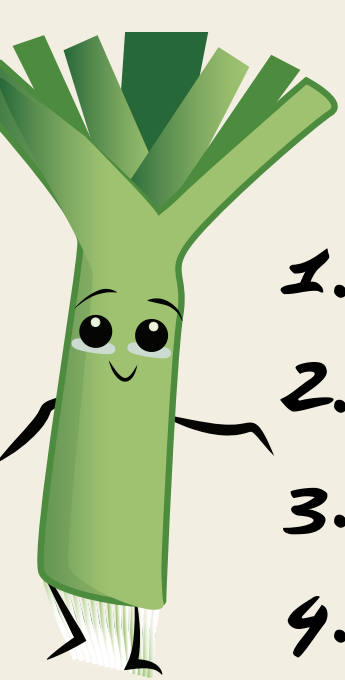
"HISTORICAL KALEIDOSCOPE"

1. WHO IS THE PRESENT MONARCH OF THE UK? (KING CHARLES III)
2. THE MOST FAMOUS 19TH-CENTURY QUEEN? (QUEEN VICTORIA)
3. IN WHICH COUNTRY WAS WILLIAM SHAKESPEARE BORN?
(ENGLAND)
4. WHAT HAPPENED IN 1066? (THE BATTLE OF HASTINGS)

EDINBURGH

CARDIFF

BELFAST



ROUND 4.

"CULTURE AND TRADITIONS"

1. TRADITIONAL BRITISH DRINK AT 5 P.M.? (FIVE O'CLOCK TEA)
2. THE MOST POPULAR SPORT IN BRITAIN? (FOOTBALL)
3. A TRADITIONAL ENGLISH BREAKFAST DISH? (BACON WITH EGGS)
4. THE FAMOUS SHOPPING STREET IN LONDON? (OXFORD STREET)

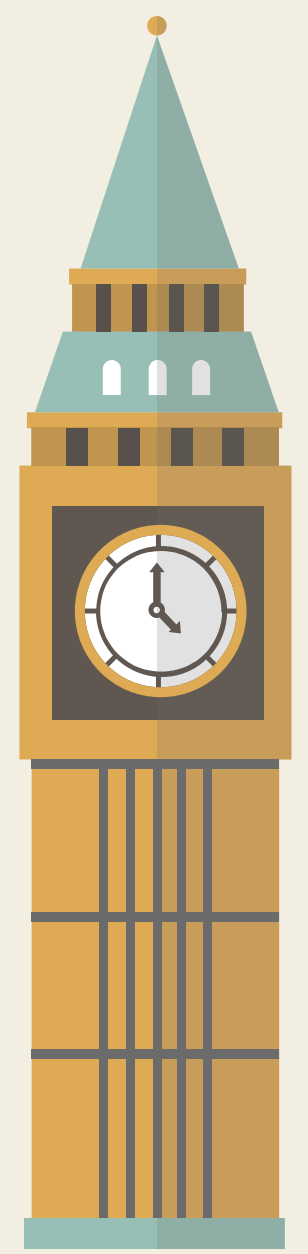


ROUND 5.

"CAPTAINS' BLITZ"

CAPTAIN 1:

1. THE LARGEST CITY IN SCOTLAND? (GLASGOW)
2. THE RIVER FLOWING THROUGH LONDON? (THE THAMES)
3. THE NATIONAL SYMBOL OF WALES? (LEEK / DAFFODIL)
4. THE HIGHEST MOUNTAIN IN THE UK? (BEN NEVIS)
5. WHERE IS STONEHENGE LOCATED? (SALISBURY PLAIN)



CAPTAIN 2:

1. THE OFFICIAL LANGUAGE OF THE UK? (ENGLISH)
2. THE FLOWER SYMBOL OF NORTHERN IRELAND? (SHAMROCK)
3. THE UNIVERSITY CITY NEAR OXFORD? (CAMBRIDGE)
4. THE FAMOUS CLOCK TOWER IN LONDON? (BIG BEN)
5. THE CURRENT PRIME MINISTER OF THE UK? (UPDATE ACCORDING TO THE YEAR)



ROUND 6.

"TRUE OR FALSE"

1. LONDON EYE IS A MUSEUM. (FALSE, IT'S A FERRIS WHEEL)
2. IN LONDON, THE UNDERGROUND IS CALLED THE TUBE. (TRUE)
3. IN THE UK THERE IS RIGHT-HAND TRAFFIC. (FALSE, IT'S LEFT-HAND)
4. THE ROYAL GUARDS ARE FAMOUS FOR THEIR RED UNIFORMS. (TRUE)





RESULTS

THE JURY COUNTS THE POINTS AND ANNOUNCES THE WINNER.

TEACHER:

- WELL DONE, EVERYONE! TODAY YOU PROVED THAT YOU KNOW A LOT ABOUT THE UNITED KINGDOM. REMEMBER: LEARNING LANGUAGES AND CULTURES OF OTHER COUNTRIES HELPS US UNDERSTAND THE WORLD BETTER AND MAKE FRIENDS EVERYWHERE.



TRAVEL HACKS



SEE YOU
ON THE
NEXT TRIP

