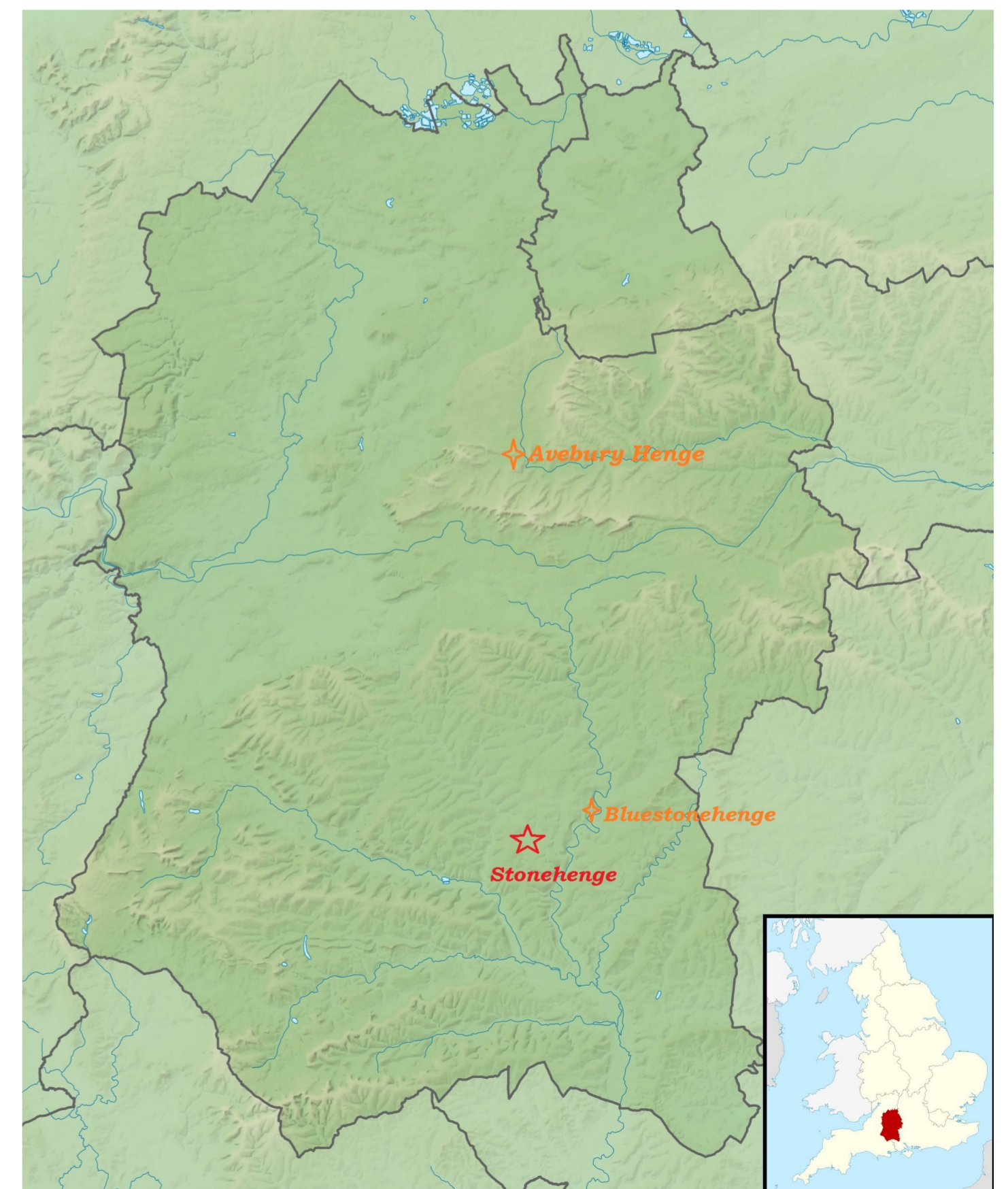
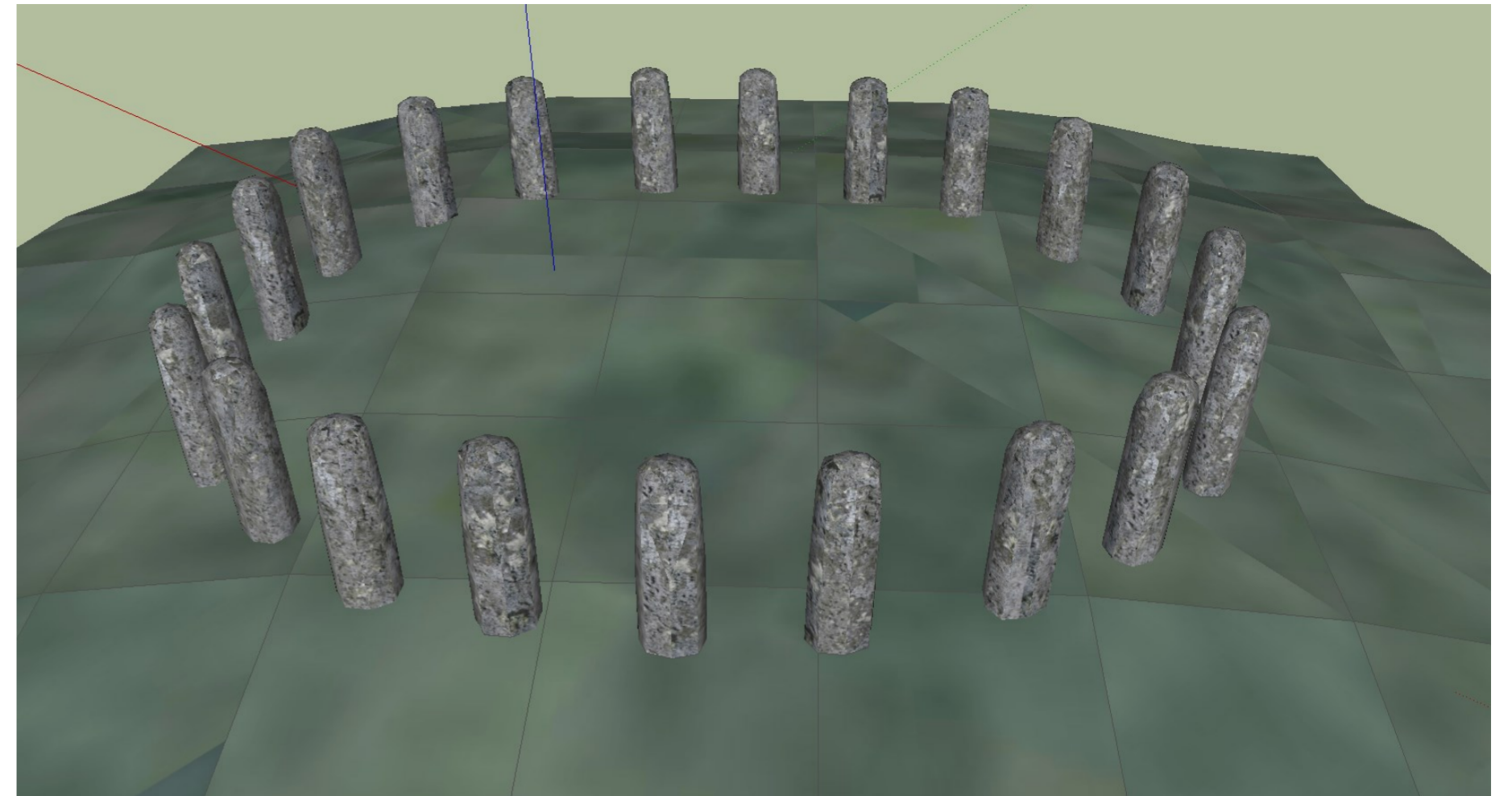


*Bluestonehenge, or Bluehenge (also known as West Amesbury Henge) is a prehistoric henge and stone circle monument that was discovered about 1 mile east of Stonehenge in Wiltshire, England. All that currently remains of the site is the ditch of the henge and a series of stone settings, none of which is visible above ground.*





*Avebury Henge is a Neolithic henge monument containing three stone circles, around the village of Avebury in Wiltshire, in southwest England. Unique amongst megalithic monuments, Avebury contains the largest stone circle in Europe, and is one of the best known prehistoric sites in Britain. It is both a tourist attraction and a place of religious importance to contemporary Pagans.*

