

# READY TO GO?



Explore  
**UKRAINE**

**KHERSON** 🔍



044-456-7890



[texlyceum@ukr.net](mailto:texlyceum@ukr.net)



Schuseva street, 20. 04060

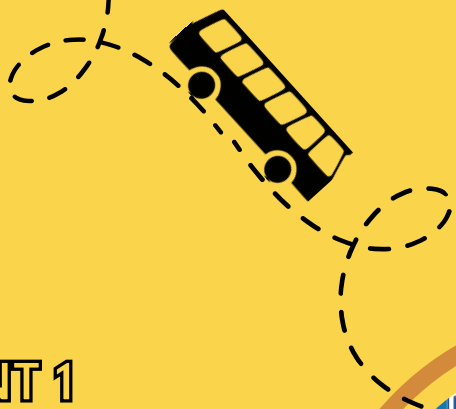


# LEARN THE HISTORY

The city is situated

The population is

Interesting fact



MONUMENT 1

MONUMENT 2



Four horizontal dashed lines for writing notes.

Four horizontal dashed lines for writing notes.

# LEARN THE HISTORY

The city is situated

The population is

Interesting fact



MONUMENT 1

MONUMENT 2



---

---

---

---

---

---

---

---

---

---

# LEARN THE HISTORY

The city is situated

The population is

Interesting fact



MONUMENT 1

MONUMENT 2



---

---

---

---

---

---

---

---

---

---

# READY TO GO?



Explore  
**UKRAINE**

**CHERNIVTSI** 🔍



044-456-7890



[texlyceum@ukr.net](mailto:texlyceum@ukr.net)



Schuseva street, 20. 04060



# LEARN THE HISTORY

The city is situated

The population is

Interesting fact



MONUMENT 1

MONUMENT 2



-----  
-----  
-----  
-----

-----  
-----  
-----  
-----

# LEARN THE HISTORY

The city is situated

The population is

Interesting fact



MONUMENT 1

MONUMENT 2



---

---

---

---

---

---

---

---

---

---

# LEARN THE HISTORY

The city is situated

The population is

Interesting fact



MONUMENT 1

MONUMENT 2

-----  
-----  
-----  
-----

-----  
-----  
-----  
-----

# READY TO GO?



Explore  
**UKRAINE**

**LVIV** 🔍



044-456-7890



[texlyceum@ukr.net](mailto:texlyceum@ukr.net)



Schuseva street, 20. 04060

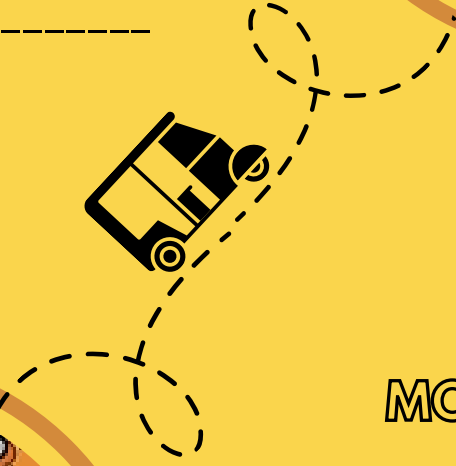
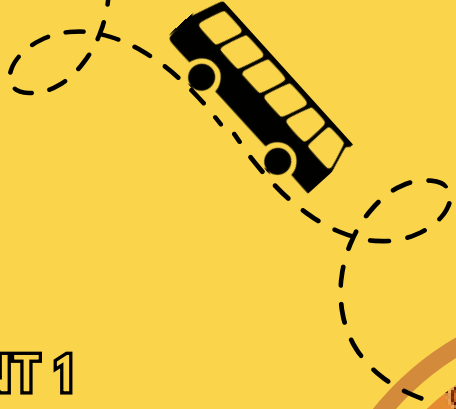


# LEARN THE HISTORY

The city is situated

The population is

Interesting fact



MONUMENT 1

MONUMENT 2

-----  
-----  
-----  
-----

-----  
-----  
-----  
-----

# LEARN THE HISTORY

The city is situated

The population is

Interesting fact



MONUMENT 1

---

---

---

---

---



MONUMENT 2

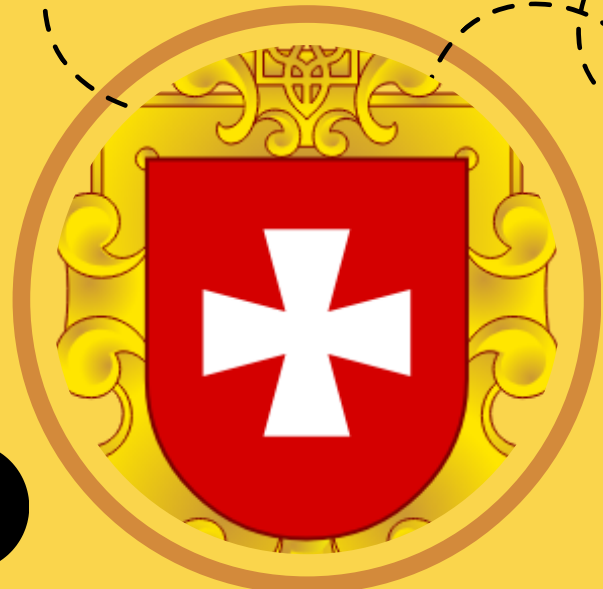
---

---

---

---

---

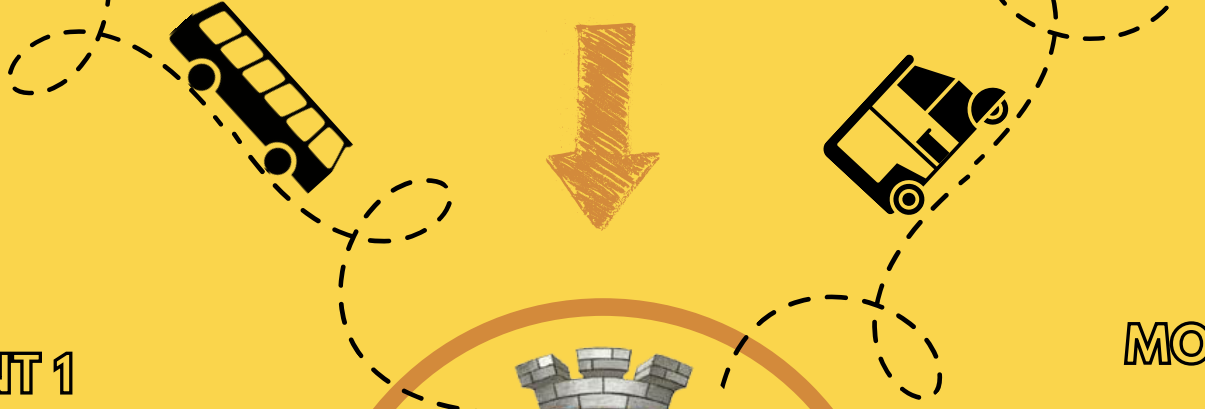


# LEARN THE HISTORY

The city is situated

The population is

Interesting fact



MONUMENT 1

MONUMENT 2

---

---

---

---

---

---

---

---

---

---



# READY TO GO?



Explore  
**UKRAINE**

**SIMFEROPOL** 🔍



044-456-7890



[texlyceum@ukr.net](mailto:texlyceum@ukr.net)



Schuseva street, 20. 04060



# LEARN THE HISTORY

The city is situated

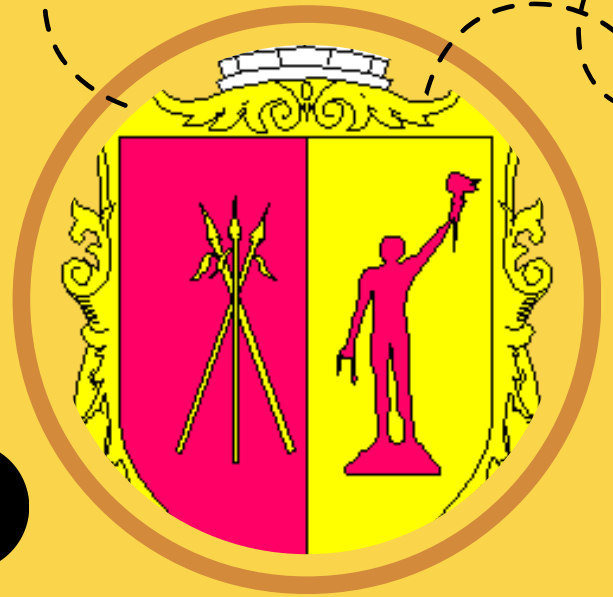
The population is

Interesting fact



MONUMENT 1

MONUMENT 2



---

---

---

---

---

---

---

---

---

---

# LEARN THE HISTORY

The city is situated

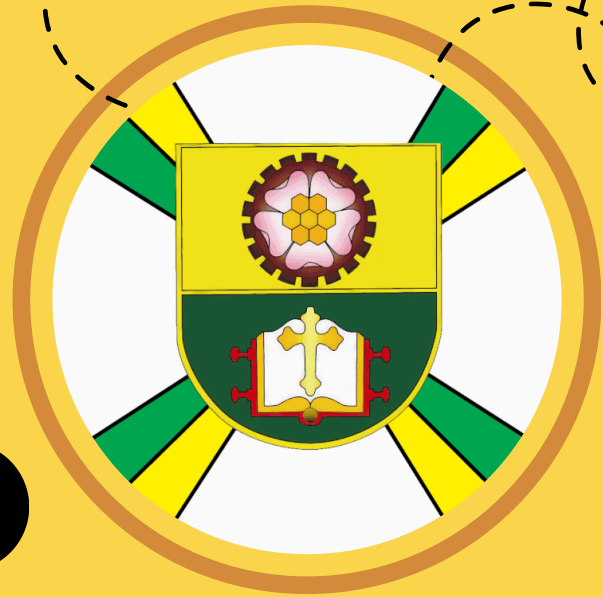
The population is

Interesting fact



MONUMENT 1

MONUMENT 2



---

---

---

---

---

---

---

---

---

---

# LEARN THE HISTORY

The city is situated

The population is

Interesting fact



MONUMENT 1

---

---

---

---

---



MONUMENT 2

---

---

---

---

---

# READY TO GO?



Explore  
**UKRAINE**

**KHARKIV** 🔍

- 📞 044-456-7890
- ✉ [texlyceum@ukr.net](mailto:texlyceum@ukr.net)
- 📍 Schuseva street, 20. 04060



# LEARN THE HISTORY

The city is situated

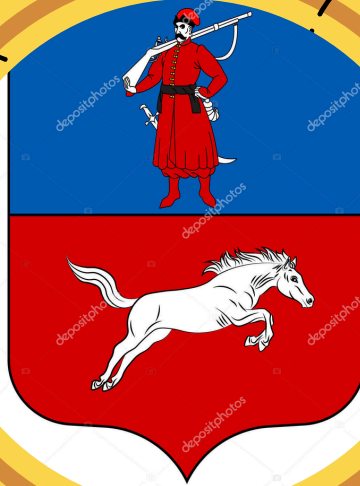
The population is

Interesting fact



MONUMENT 1

MONUMENT 2



---

---

---

---

---

---

---

---

---

---

# LEARN THE HISTORY

The city is situated

The population is

Interesting fact



MONUMENT 1

MONUMENT 2

---

---

---

---

---

---

---

---

---

---

# LEARN THE HISTORY

The city is situated

The population is

Interesting fact



MONUMENT 1

MONUMENT 2



---

---

---

---

---

---

---

---

---

---